

# MHW-3BOMBER Retractable WDT Tool 2.0 Pro



## How to replace the distribution needles



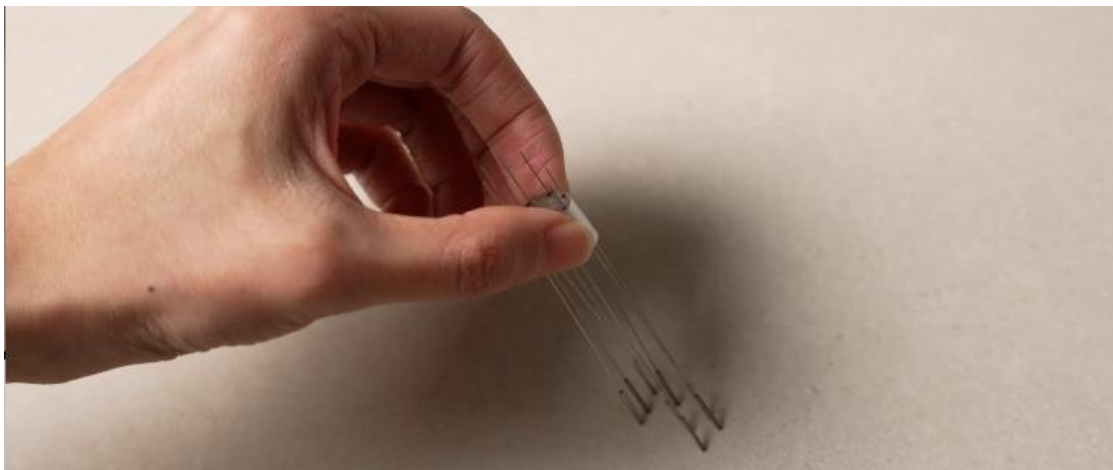
1. Be careful to zero the scale before replacing it



2. Turn the press cap counterclockwise to unscrew it.  
Remove the needle plate holder

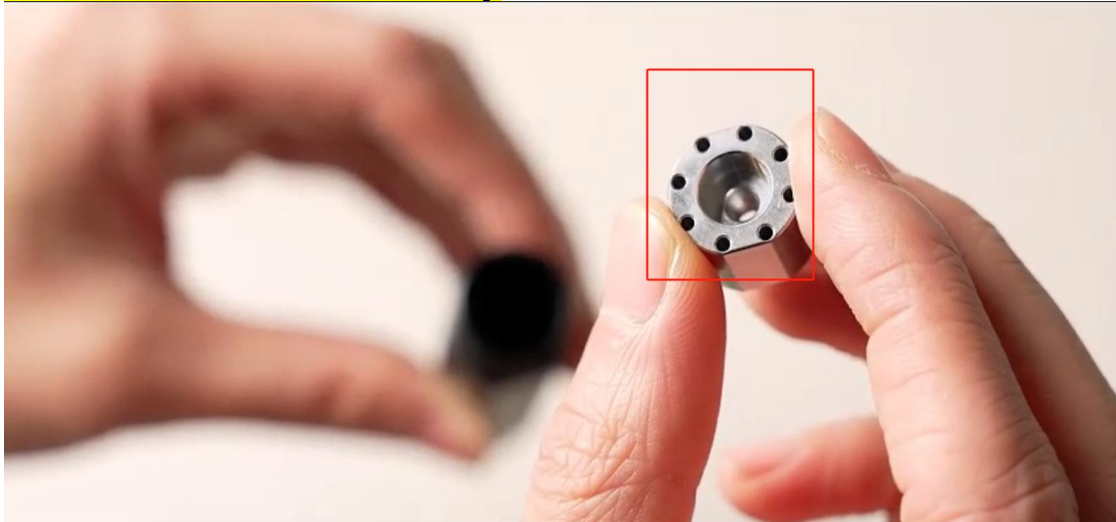


3. Unscrew the magnet bracket counterclockwise.  
Pour out the distribution needles



4.Position the concave side of the needle plate holder upward

Insert it into the main body



5.Align the pins with the small holes of the needle plate holder and insert

(Simply aim the needle at the first small hole, Gently shake the main body and the needle will pass through all the holes smoothly)



Gently shake the main body

Until the distribution needles drops through the adjustment ring

Align the remaining needles with the holes

Insert them into the needle plate holder one by one (Do not invert the main body)



6.Ensure the concave side of the magnet holder is facing upward

Insert it into the main body

Tighten with a flat head screwdriver in a clockwise direction





7. Place the magnet into the magnet holder's groove  
(If the magnet is misaligned, use a plastic tool to adjust the magnet)



8. Align the press cap with the main body  
Tighten it clockwise to complete the replacement