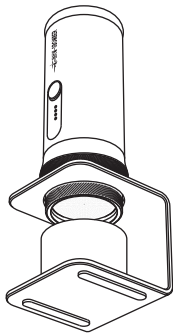



INSTRUCTIONS



 **MHW-3BOMBER®** X-press58 Espresso Machine



Scan the QR code to view
the video instructions

PRODUCT PARAMETERS

Name	X-press58 Espresso Machine	Filter Basket Capacity	18g
Color	Black	Extraction Pressure	Standard 9Bar, Max 20Bar
Weight	About 823g	Water Tank Capacity	Max80mL
Output Power	150W	Built-In Battery	13500mAh
Charging Power	10~30W supports fast charging protocols QC2.0 and PD3.1 (see charging settings for details)		
Material	ABS ,PP,PPO,Silicone,304 Stainless Steel,Aluminum Alloy,Nylon,PBT		

Safety Instructions & Precautions

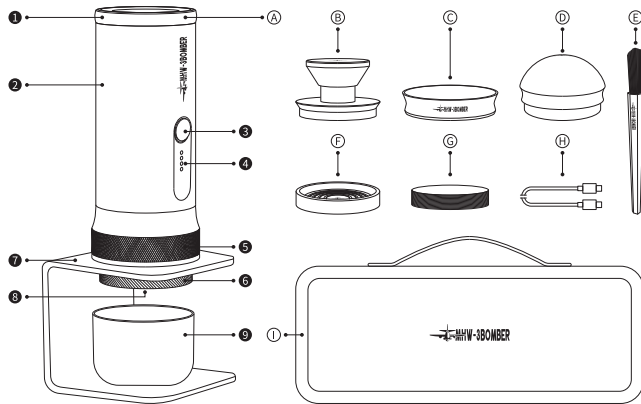
Read these instructions carefully before using the X-press58 Espresso Machine to avoid personal injury or equipment damage.

1. Check integrity (unboxing/each use); don't use if damaged; no self-repairs.
2. Fill water tank (no empty heating); use only pure water (no juice/milk).
3. Ensure water tank is filled before use. Never heat with empty tank.
4. Wait a few minutes after extraction before removing the coffee puck to avoid scalding.
5. Do not immerse the main unit in water or rinse under running water. Wipe surface with a damp cloth; clean removable parts separately under running water. Not dishwasher-safe.
6. Do not leave unattended while charging. Do not charge if power cord, plug or charger is damaged.
7. Unplug charger right after full charge to avoid battery damage or shortened lifespan from overcharging.
8. Power only with the safety extra-low voltage (SELV) marked on the machine.
Charge to over 50% every 3 months if unused for long periods.
9. For household and similar use only.
10. Not for use by persons (including children) with reduced physical, sensory or mental capabilities, or lack of experience/knowledge, unless supervised and instructed by a responsible person.

WARNING: Do NOT use the X-press58 Espresso Machine on aircraft.

COMPONENTS AND ACCESSORIES

Ⓐ X-press58 Espresso Machine	Ⓑ Tamper	Ⓒ Dosing Ring	Ⓓ Air Blower
Ⓔ Brush	Ⓕ Silicone Storage Mat	Ⓖ 58mmEspresso Filter Paper	
Ⓗ Type-C Charging Cable	Ⓘ Storage Bag	Ⓙ Product Guide	



① Cover	② Espresso Machine	③ Start Button	④ Indicator Light	⑤ Group Head
⑥ Bracket	⑦ 58mm Filter Basket	⑧ Retaining Ring	⑨ Coffee Cup	

FUNCTION INTRODUCTION

Caption	Press start → Show battery	Charging	Fully charged	Heating	Extracting
pattern					
status	The indicator light corresponds to the battery level.	Indicator = Battery Level	4 indicators: Always on	Indicator = Temp (Breathing light display)	Revolving lantern display

HEATING TEMPERATURE SETTING INSTRUCTIONS

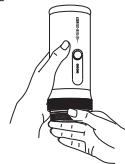
Heating Temperature Setting Instructions Indicator Lights (Top to Bottom): 96°C, 92°C, 88°C, 84°C
Adjustment Steps: Press start button 5x quickly to enter adjustment mode. Press start again to select target temp (indicator lights up). Setting succeeds when indicator goes off; device retains last temp.

PRE-INFUSION SWITCH INSTRUCTIONS

Press Start 6x quickly to enter mode, 4 lights = ON; Lights 1&4 = OFF, Press Start to toggle Saved when lights off; last status remembered

PREPARATIONS BEFORE USE

- Before using the device for the first time, first check if it has power.
(Press the start button once to display the battery level.)
- If no liquid flows out during continuous extraction, first loosen the filter basket retaining ring about 1/4 turn to release pressure, then re-tighten it.



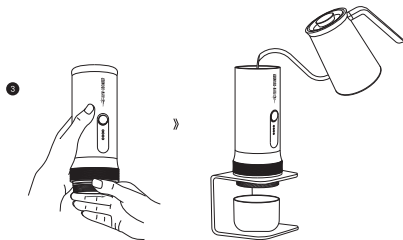
COFFEE MACHINE INSTRUCTIONS



Remove the coffee cup and Retaining Ring



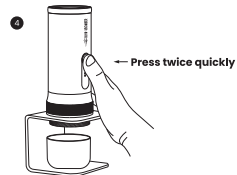
Attach the Magnetic Dosing Ring, add 18g coffee powder, tap to evenly distribute the coffee powder, then use a tamper to tamp the grounds firmly directly.



Tighten the filter basket retaining ring to the coffee machine (if not fully tightened, it may cause water leakage or extraction failure);
Open the coffee machine lid, pour in purified water (ensuring it does not exceed the MAX level mark), then securely close the lid.

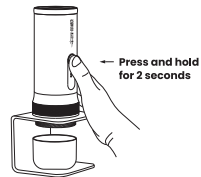
Direct Extraction Mode:

Quickly press the start button twice to enter the pre-infusion phase; extraction begins after 10 seconds.



Heating Extraction Mode:

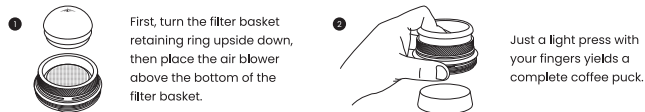
Press and hold the start button for 2 seconds; heating will start after the buzzer gives a prompt. Wait 2~4 minutes (depending on water volume) until the buzzer gives another prompt, signaling that heating is complete. Then the pre-infusion phase will start, and extraction will begin after 10 seconds. (During extraction, tap the start button once to stop extraction.)



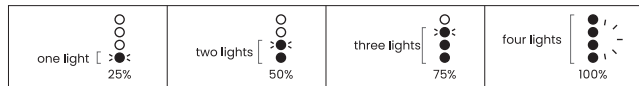
During heating, the temperatures corresponding to the indicator lights are shown below; please refer to the following temperature instructions.

 20°C~40°C	 40°C~60°C	 60°C~80°C	 80°C~96°C
--	--	--	--

AIR BLOWER INSTRUCTIONS



CHARGING INSTRUCTIONS



1. It is recommended to use a charging adapter with a power of 30W or higher that supports the QC2.0 and PD3.1 fast-charging protocols. Avoid using chargers below 10W. **Type-C**
2. Use a Type-C charging cable. During charging, the charging indicator lights will gradually brighten as progress advances. When the battery is fully charged, all four charging indicator lights will remain solid.
3. Charging time: 30W ~ 2 hours, 20W ~ 2.5 hours, 10W ~ 6 hours (approx.)



DAILY CLEANING

1. After each use, empty the filter basket, remove it, and clean it.
2. Unloaded operation, Pour hot purified water into the water reservoir, press the start button twice quickly, repeat the unloaded operation to clean the interior, then empty and dry the water reservoir.
3. The buttons on the coffee machine body and the charging port must not be washed with water.
4. It is recommended to clean the coffee machine thoroughly once a week (Do not use detergents for cleaning the coffee machine).

WARRANTY CARD

Thanks for purchasing MHW-3BOMBER products.
With this warranty card, it can enjoy free maintenance service for 1 year from the date of purchase if the product is not disassembled or damaged artificially.

WARRANTY RULES

THE FOLLOWING CONDITIONS DO NOT BELONG TO THE SCOPE OF FREE WARRANTY:

1. Damage caused by human factors such as operation, maintenance, storage and self-disassembly not in accordance with the instruction;
2. Damage caused by improper operations or accidents (falling, etc.);
3. Damage caused by force majeure factors (such as lightning, earthquake, fire, flood, etc.).

MAINTENANCE INFORMATION

Product name and model _____
Purchase time _____
Purchase methods _____
Order number _____
Customer name _____
Customer contact information _____
Return reason _____

POST-SALE SERVICE REGISTRATION

☐ Maintenance ☐ Change ☐ Return

CERTIFICATION

THIS DEVICE MEETS QUALITY STANDARDS ACCORDINGLY

TEL: 400-9922-092

QA: _____

Qualified
02

MAINTENANCE RECORD

Maintenance Date	Fault Condition	Maintenance Results

ABOUT US

Since our inception, mhw-3bomber has continuously focused on specialty coffee wares.
While maintaining high quality,
We have revolutionized traditional concepts by redefining
Coffee aesthetics through innovative product designs.

IF YOU HAVE ANY QUESTIONS, PLEASE CONTACT US

🏢 MHW-3BOMBER Coffee Equipment Manufacturing (Zhongshan) Co., Ltd.
📍 Unit 1, 8th Floor, Building B, No. 1 Jintian Street, Fusha Town, Zhongshan City
☎ 400-9922-092
🌐 WWW.MHW3BOMBER.COM



Instagram



@MHW-3BOMBER

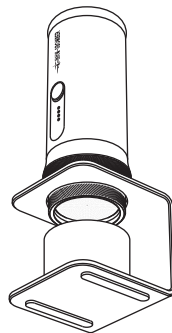


info@mhw3bomber.com



@MHW-3BOMBER

产品说明书



✈ MHW-3BOMBER® X-press58意式咖啡机



可扫码查看视频说明书

产品参数

品名	X-press58意式咖啡机	颜色	黑色
产品重量	约823g	萃取压力	标准9Bar, 最大20Bar
粉碗容量	18g	水仓容量	Max80mL
输出功率	150W	内置电池	13500mAh
快充协议	10~30W 支持快充协议QC2.0、PD3.1 (有关说明请参阅充电设置)	材质	ABS、PP、PPO、硅胶、304不锈钢 铝合金、尼龙、PBT

使用安全和注意事项

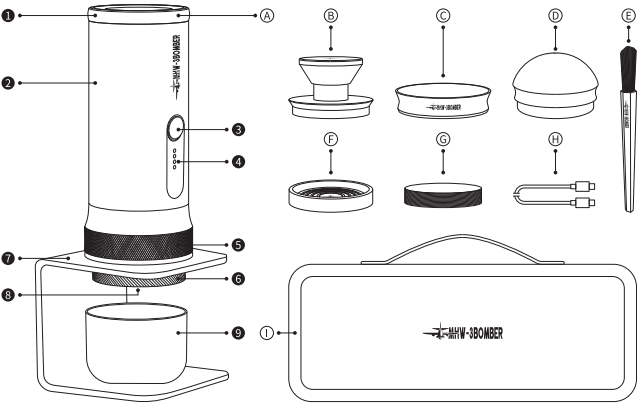
请在使用X-press58意式咖啡机之前，仔细阅读以下说明，以免造成人身伤害或设备损坏。

1. 开箱及每次使用前检查设备完整性并确认无异常，如有损坏请勿使用，严禁自行修理或更换零件；
2. 使用前确保水仓有水，勿空仓加热，以防损坏，此器具仅使用纯净水，禁止添加果汁、牛奶等其他液体；
3. 勿倒置机器，加热时保持设备水平，工作中勿开盖，防止溅水和烫伤；
4. 建议萃取后等待几分钟再取粉饼，避免烫伤；
5. 器具不得浸入水中，请勿将机身放在流水下清洁，请使用湿布擦拭表面，其余可拆卸部分可以使用流水单独清洗，不可进洗碗机；
6. 充电时不要让机器处于无人看管的状态，如果电源线、插头或充电器损坏，请勿充电；
7. 当设备充满电时，请及时拔掉充电器，以防止过度充电损坏电池或缩短电池寿命；
8. 必须仅使用标记在器具上的安全特低电压供电,长期不使用时，需每3个月充电至50%以上；
9. 器具应被用于家用和类似用途；
10. 器具不打算由存在肢体、感官或精神能力缺陷或缺少使用经验和知识的人(包括儿童)使用，除非有负责他们安全的人对他们进行与器具使用有关的监督或指导。

警告：出于安全考虑，请勿在飞机上使用X-press58意式咖啡机






产品部件及配件

Ⓐ X-press58意式咖啡机	Ⓑ 压粉器	Ⓒ 接粉环	Ⓓ 气吹	Ⓔ ABS毛刷
Ⓕ 硅胶收纳垫	Ⓖ 58mm粉碗滤纸	Ⓗ Type-C 充电线	Ⓘ 收纳包	Ⓣ 说明书



① 盖子	② 萃取机	③ 启动按钮	④ 指示灯	⑤ 冲煮头
⑥ 粉碗固定环	⑦ 支架	⑧ 58mm粉碗	⑨ 咖啡杯	

功能介绍

说明	按一次启动按钮 显示电量	充电中	充满电	加热中	萃取中
图案					
状态	指示灯对应 电量灯光亮	指示灯对应电量 灯光呼吸灯显示	四个指示灯常亮	指示灯对应温度 灯光呼吸灯显示	指示灯 走马灯显示

加热温度设置说明

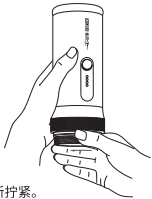
指示灯光由上至下代表的温度分别为96°C / 92°C / 88°C / 84°C，快速按启动按钮5次后进入调温功能，对应温度指示灯亮，按下启动按钮选择对应加热温度，灯光熄灭后即设置成功，程序会记忆上一次设定的加热温度。

预浸泡开关说明

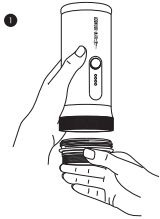
快速按启动按钮6次后进入预浸泡开关功能，灯光提示：4个灯亮表示开启，1灯和4灯亮表示关闭预浸泡功能，按下启动按钮选择开启或关闭，灯光熄灭后即设置成功，程序会记忆上一次设定的状态

使用前准备事项

- 首次使用设备前，先检查是否有电，(按启动按钮一次，显示电量)
- 连续萃取过程中，如遇无液体流出，请先松开粉碗固定环约1/4圈泄压，随后重新拧紧。



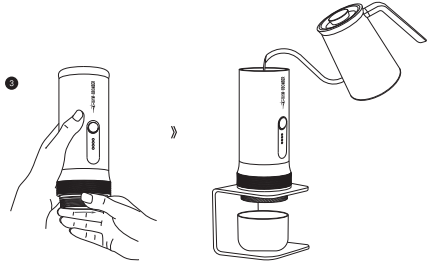
咖啡机使用方法



取下咖啡杯、粉碗固定环



套上磁吸接粉环，加入 18g咖啡粉，
摇晃使咖啡粉均匀分布后，用压粉器直接填压紧实



将粉碗固定环与咖啡机拧紧(未拧紧可能导致漏水或萃取失败)；
打开咖啡机盖子，注入纯净水不可超过MAX刻度线，盖好盖子

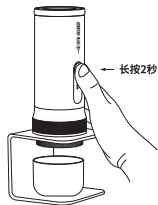
直接萃取模式：

快速按压启动按钮2次，进入预浸泡阶段；
10秒后开始萃取







加热萃取模式：

长按启动按钮2秒，蜂鸣器提示后开始加热；
等待2-4分钟(根据水量差异)，待蜂鸣器再次提示，加热完成。
随后进入预浸泡阶段，10秒后开始萃取。
(萃取过程中，轻触启动按钮1次可停止萃取)







加热时，指示灯对应显示温度请参见以下温度说明

 20°C~40°C	 40°C~60°C	 60°C~80°C	 80°C~96°C
--	--	--	--

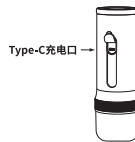
气吹使用方式



充电说明

 1盏灯 [25%	 2盏灯 [50%	 3盏灯 [75%	 4盏灯 [100%
--	--	--	---

- 建议使用功率30W及以上，支持QC2.0和PD3.1快充协议的充电适配器，避免使用10W以下的充电器。
- 使用Type-C充电线，充电时指示灯随进度渐亮，电池充满后，四个指示灯常亮。
- 充电时间：30W约2小时，20W约2.5小时，10W约6小时。



日常清理

- 每次使用后，清空并取出粉碗清洁；
- 空载运行，倒入热纯净水至水仓，快速按启动按钮2次，重复清洁内部，清空并擦干水仓；
- 咖啡机机身按钮和充电口不可水洗；
- 建议每周清洁一次咖啡机（不要使用清洁剂）。

售后保修卡

感谢您购买MHW-3BOMBER品牌产品，产品如无私自拆卸或人为损伤，凭此保修卡可享受由购买日起为期1年的免费维修服务。

保修条例

以下情况不属于免费保修范围：

1. 未按说明书规定操作，维护，保管，自行拆卸等人为因素而造成的损坏；
2. 使用不当，意外疏忽(摔落等)造成的损坏；
3. 因不可抗力因素(如雷电，地震，火灾，水灾等)造成损坏。

维护信息

产品名称及型号 _____

购买时间 _____

购买方式 _____

订单编号 _____

客户姓名 _____

联系方式 _____

退货原因 _____

售后登记

☐ 维修 ☐ 换货 ☐ 退货

合格证

本产品经检验符合质量标准要求
电话: 400-9922-092

检验员: _____



维修记录

修理日期	故障情况	维修结果

关于我们

MHW-3BOMBER轰炸机品牌自诞生起，持续专注精品咖啡器具，在坚守品质的同时颠覆传统，用突破性的产品设计重新定义咖啡美学。

如有任何疑问请与我们联系

📍 轰炸机咖啡设备制造(中山)有限公司
📍 中山市阜沙镇锦添街1号B幢第8层第一卡
☎ 400-9922-092
🌐 WWW.MHW3BOMBER.COM



更多资讯关注官方公众号



@MHW-3BOMBER



info@mhw3bomber.com



@MHW-3BOMBER